



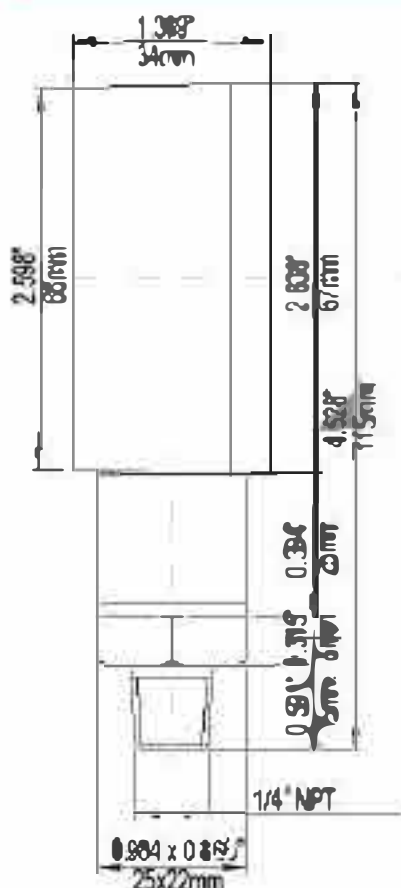
Description & Features:

- Simple 2 button operation
- Re-zero feature and peak pressure reading
- Backlight turns on when on/off button is pressed and with pressure changes
- 316L welded diaphragm seal
- Rubber boot is standard
- 5 year warranty

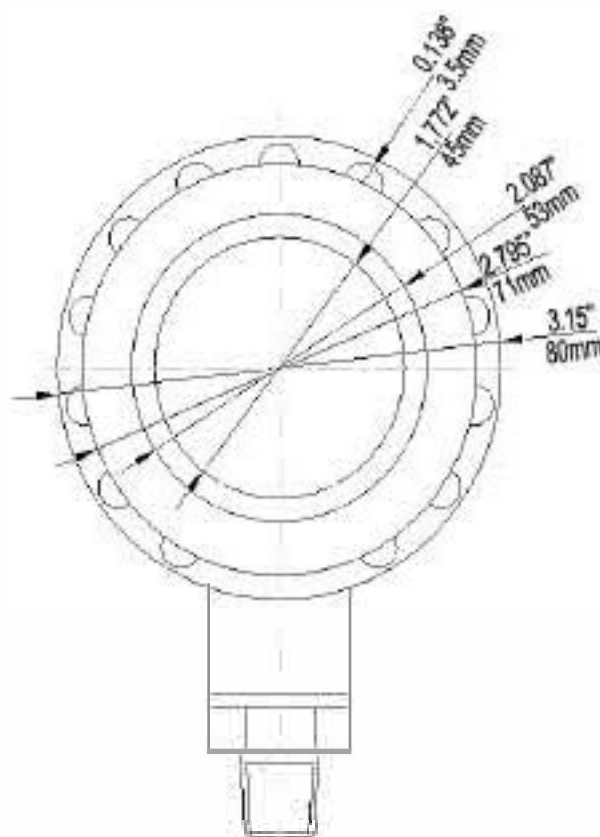
Applications:

- Ideal for commercial and industrial applications in both test measurement and general purpose installations.

Specifications		Order Codes	
Case Size	2.5" (63mm)	Dial Size	2.5" (63mm)
Case Material	ABS (IP64)	Connection	1/4" Bottom
Rubber Boot	Silicone rubber (IP65)	Socket	SS
LCD Display	2" x 3/4" (48mm x 16mm)	30" Hg Vac	DPG210
Connection	1/4" NPT 304SS	30"/0/15 psi	DPG203
Sensor	316L welded, Piezo	30"/0/30 psi	DPG204
Operation Life	1 million cycles	30"/0/60 psi	DPG205
Power Supply	2 x AAA battery (1.5V)	30"/0/100 psi	DPG206
Battery Life	2 yrs (auto shut-off mode)	0/15 psi	DPG211
Power Mode	Auto or manual shut off	0/30 psi	DPG212
Display Digits	4 digits to 5,000 psi 5 digits for 10,000 psi	0/60 psi	DPG213
Resolution	1 digit	0/100 psi	DPG214
Pressure Unit Selection	psi, mmH ₂ O, mmHg, mbar, kPa ≤ 100 psi psi, bar, kg/cm ² , mPa, atm ranges ≥ 160 psi	0/160 psi	DPG215
Operation Mode	Continuously reading or peak pressure reading	0/200 psi	DPG216
Response Time	≤3 Hz display refresh rate	0/300 psi	DPG217
Proof / Burst Pressure	200% / 300% FS	0/600 psi	DPG218
Operating / Storage Temperature	14°F to 122°F (-10°C to 50°C) -4°F to 167°F (-20°C to 75°C)	0/1,000 psi	DPG219
Accuracy	±0.5%	0/1,500 psi	DPG220
		0/2,000 psi	DPG221
		0/3,000 psi	DPG222
		0/5,000 psi	DPG223
		0/10,000 psi	DPG224



DPG SERIES
without rubber cover



DPG SERIES
with rubber cover



LCD Display

Battery Reading

Pressure Reading

Pressure Scale (units)

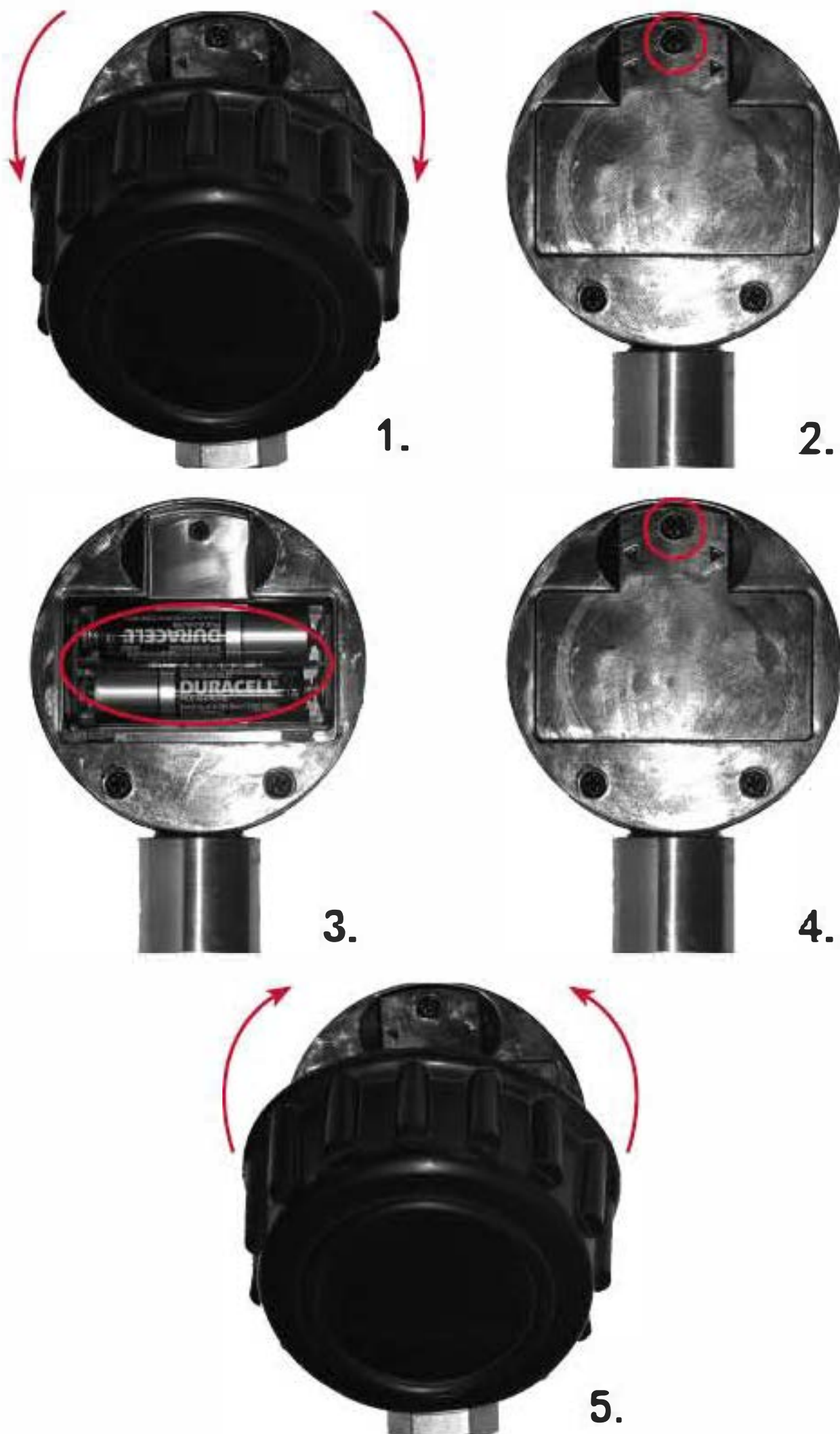
Power Button

- Press
 - Turns gauge ON for 1 minute (backlight* will stay on for 10 sec)
 - Turns gauge OFF
 - Displays battery reading during power ON
- Tap
 - Turns backlight* back on for 10 sec

* backlight automatically comes on when pressure changes $\pm 10\%$ of scale (when gauge is ON)

Menu Button

- Press
 - Changes pressure units (psi, mH₂O, mbar, kPa ≤ 100 psi, psi, bar, Kg/cm², MPa ≥ 160 psi)



To Change Batteries

1. Remove Rubber Boot
2. Remove Top Phillips Screw to Open Cover
3. Exchange Batteries
4. Close Cover and Re-install Screw
5. Re-install Rubber Boot